

# HOW THE RIVER SHAPED THE VALLEY



# Snoqualmie Valley





WHY ARE HAS NO ONE FOUND DINOSAUR BONES IN WA?



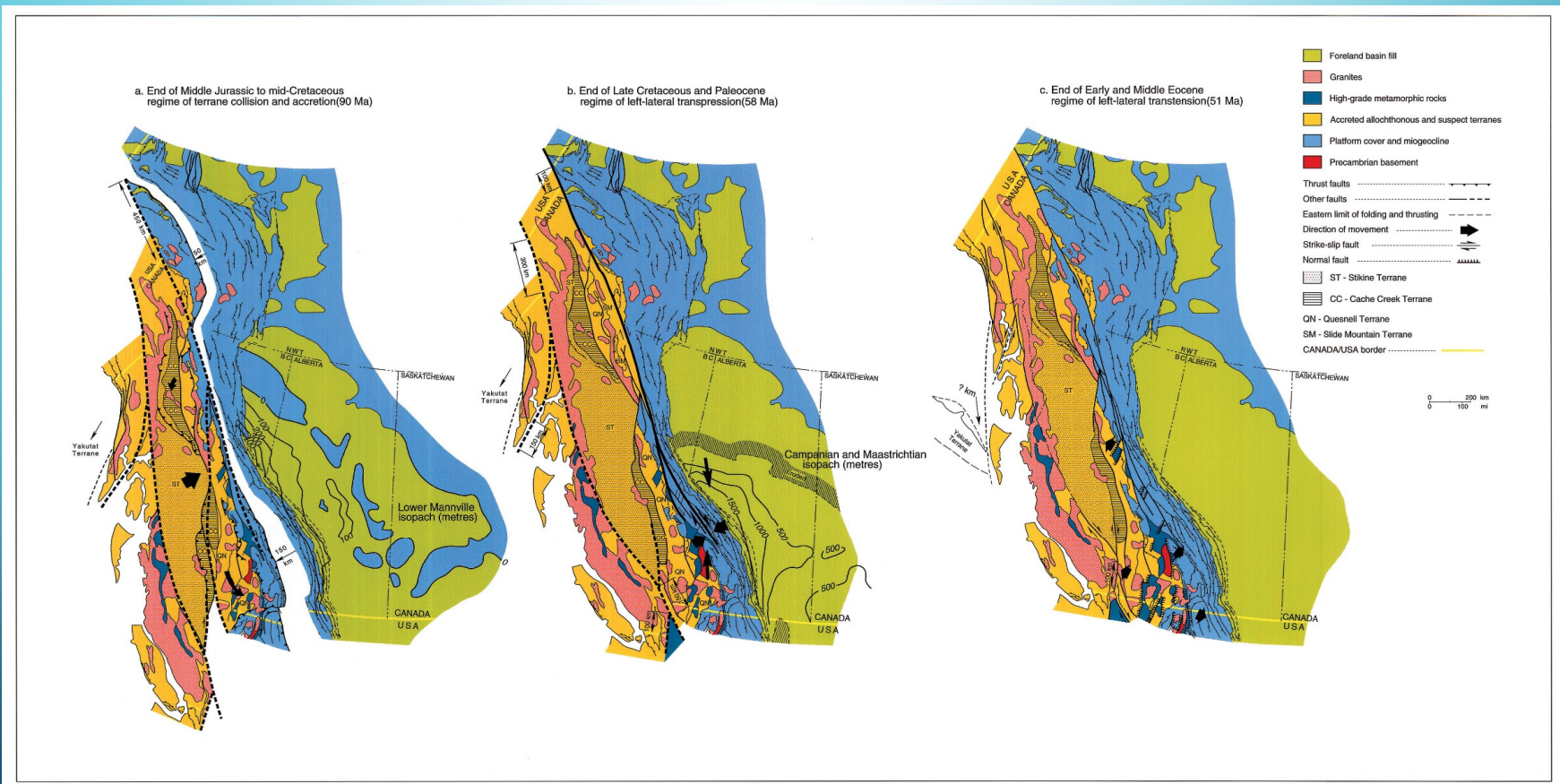
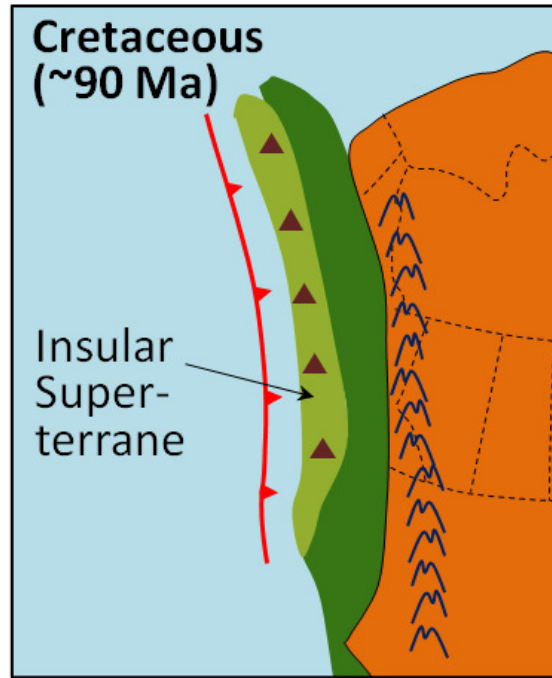
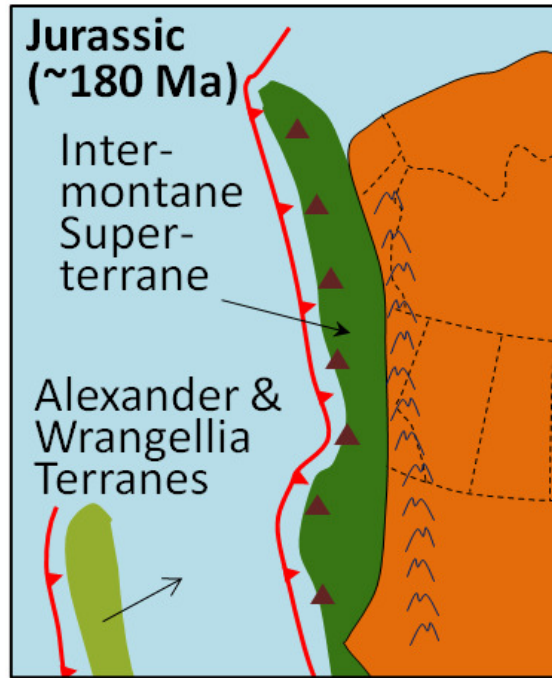
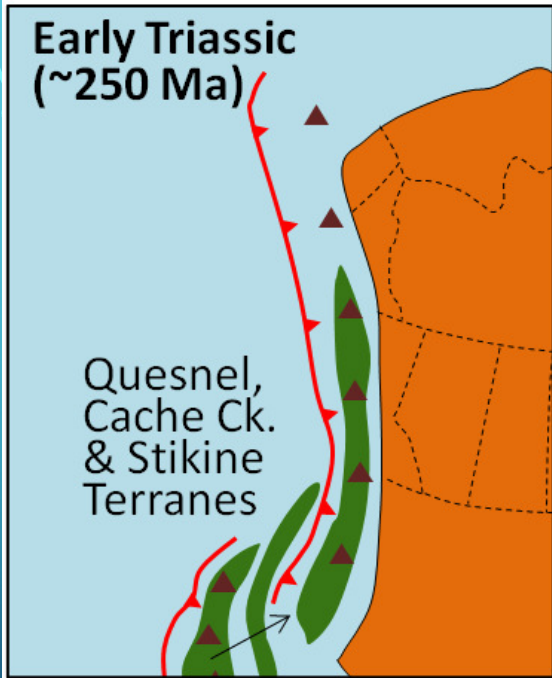
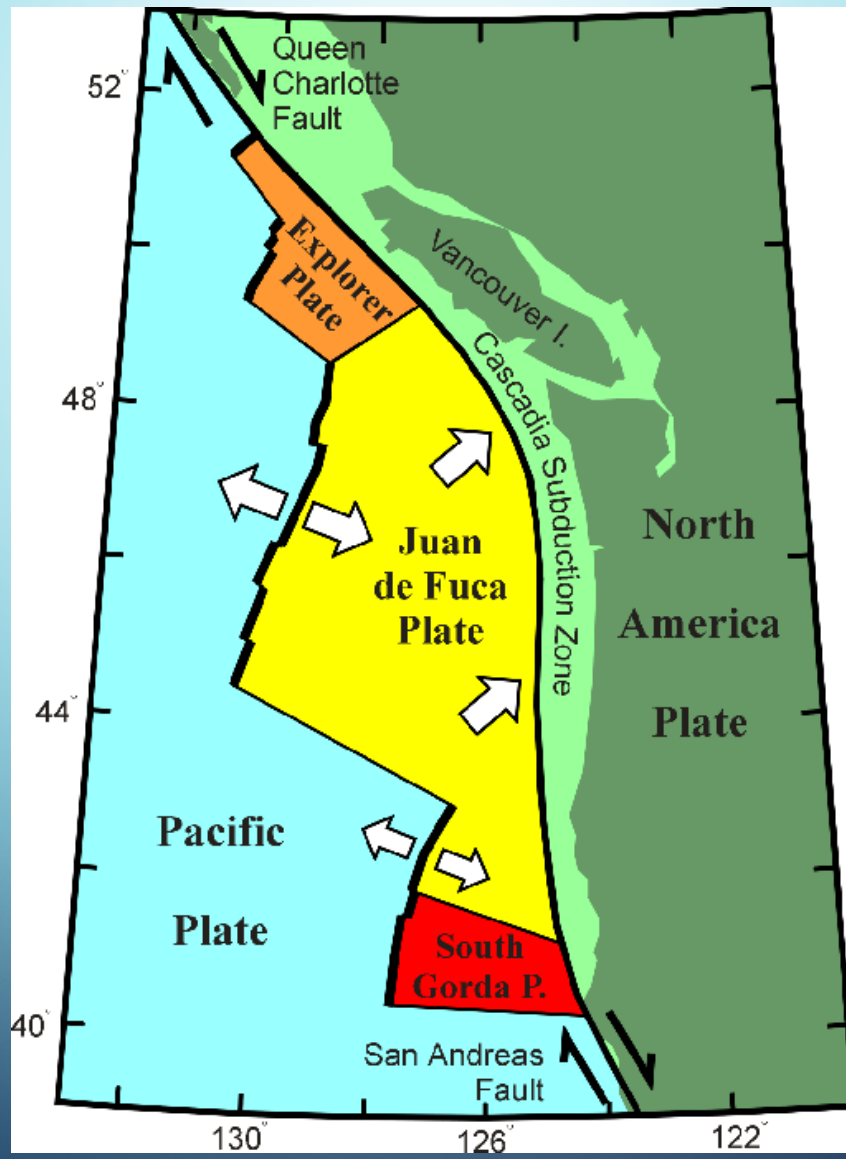


Figure 2.16 Three stages in the tectonic evolution of the Canadian Cordillera: a. end of Early Cretaceous and Late Jurassic regime of terrane collision, indentation and lateral escape; b. end of Late Cretaceous and Paleocene regime of left-lateral transpression; c. end of Early and Middle Eocene regime of left-lateral transtension.

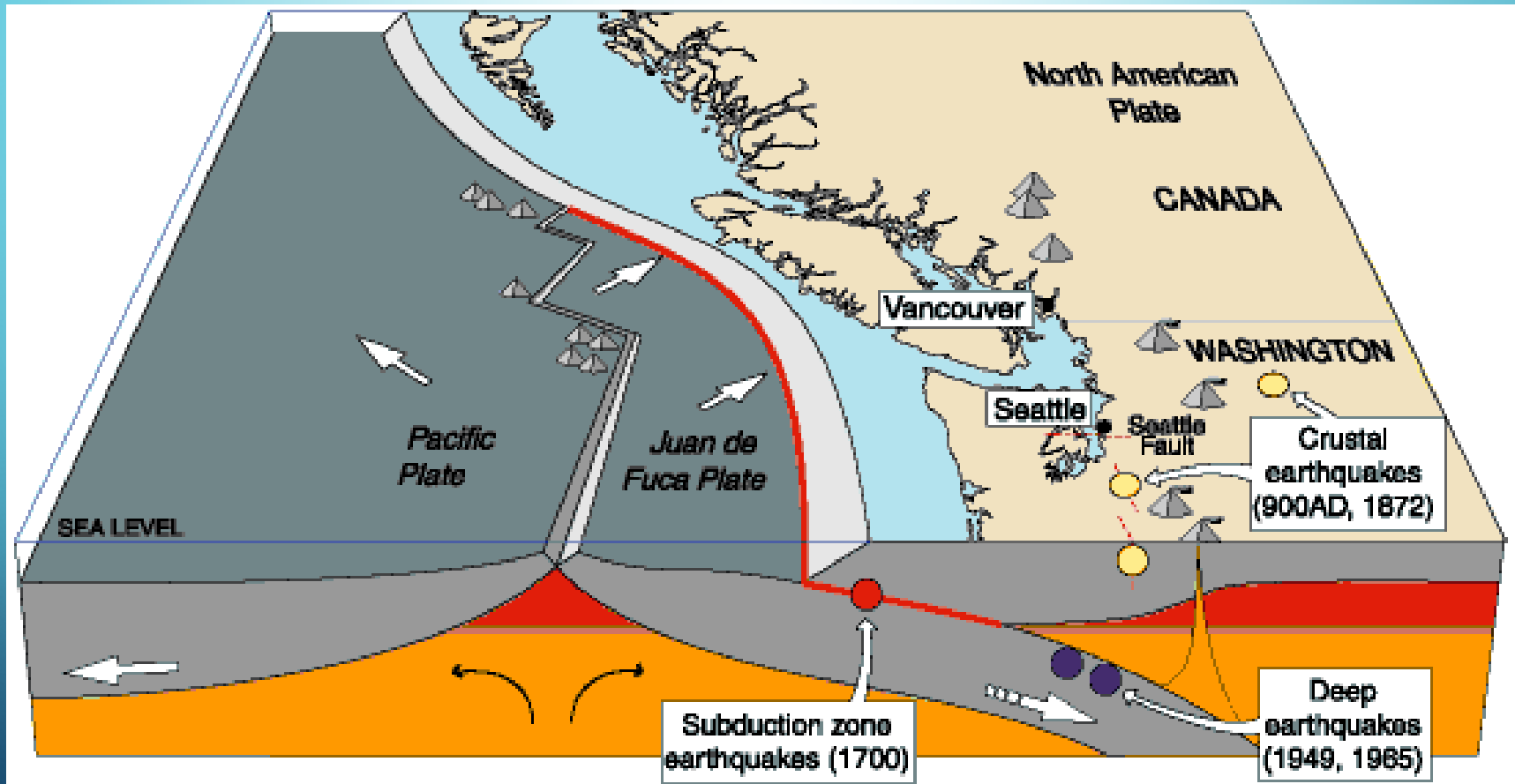




## Active Volcanoes, Plate Tectonics, and the "Ring of Fire"









Cordilleran  
Ice Sheet

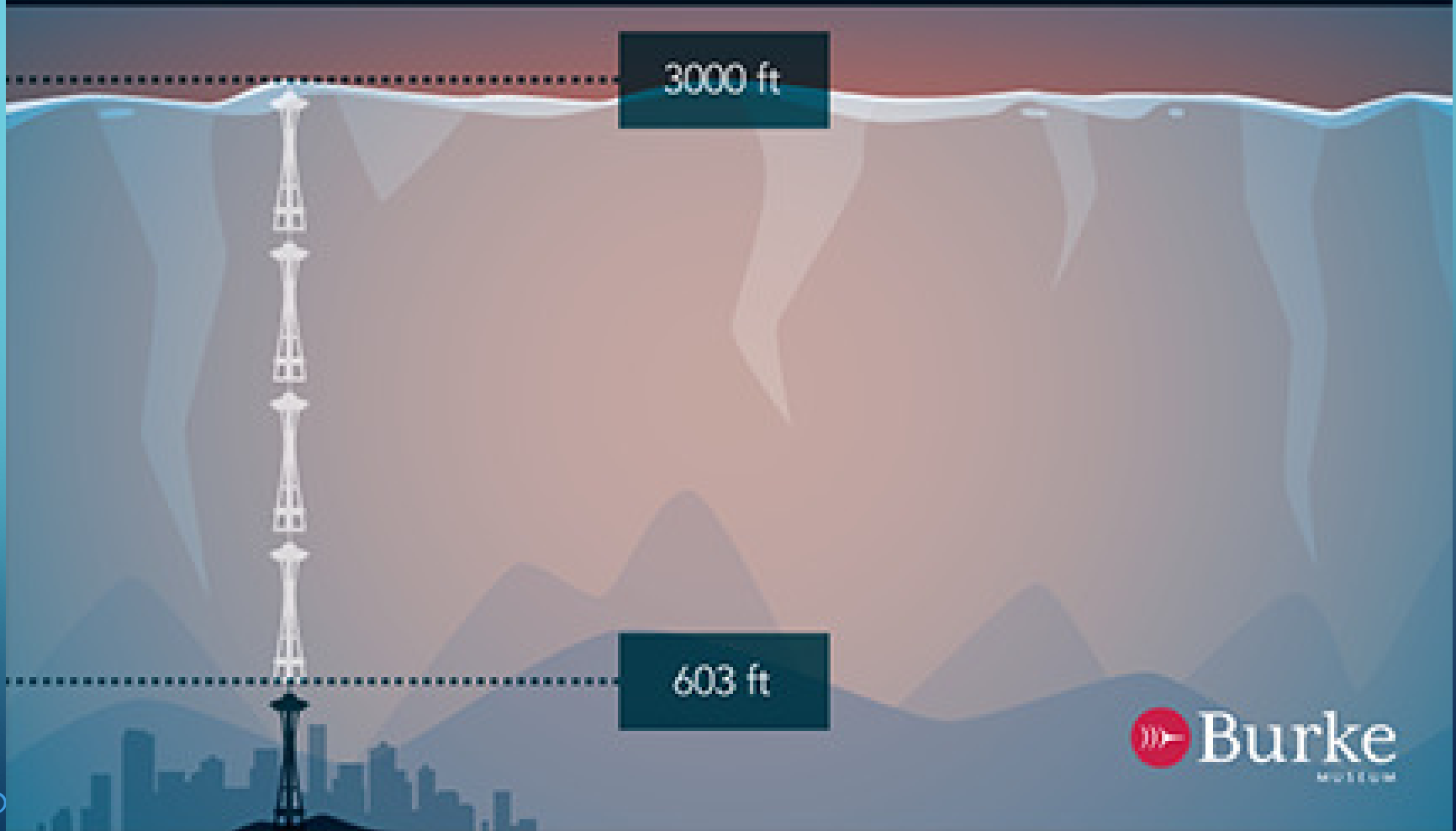
Laurentide Ice Sheet





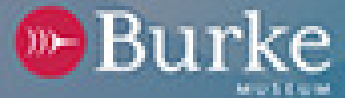
**"Puget Lobe"**  
ice sheet  
covering  
present-day  
**Puget Sound**

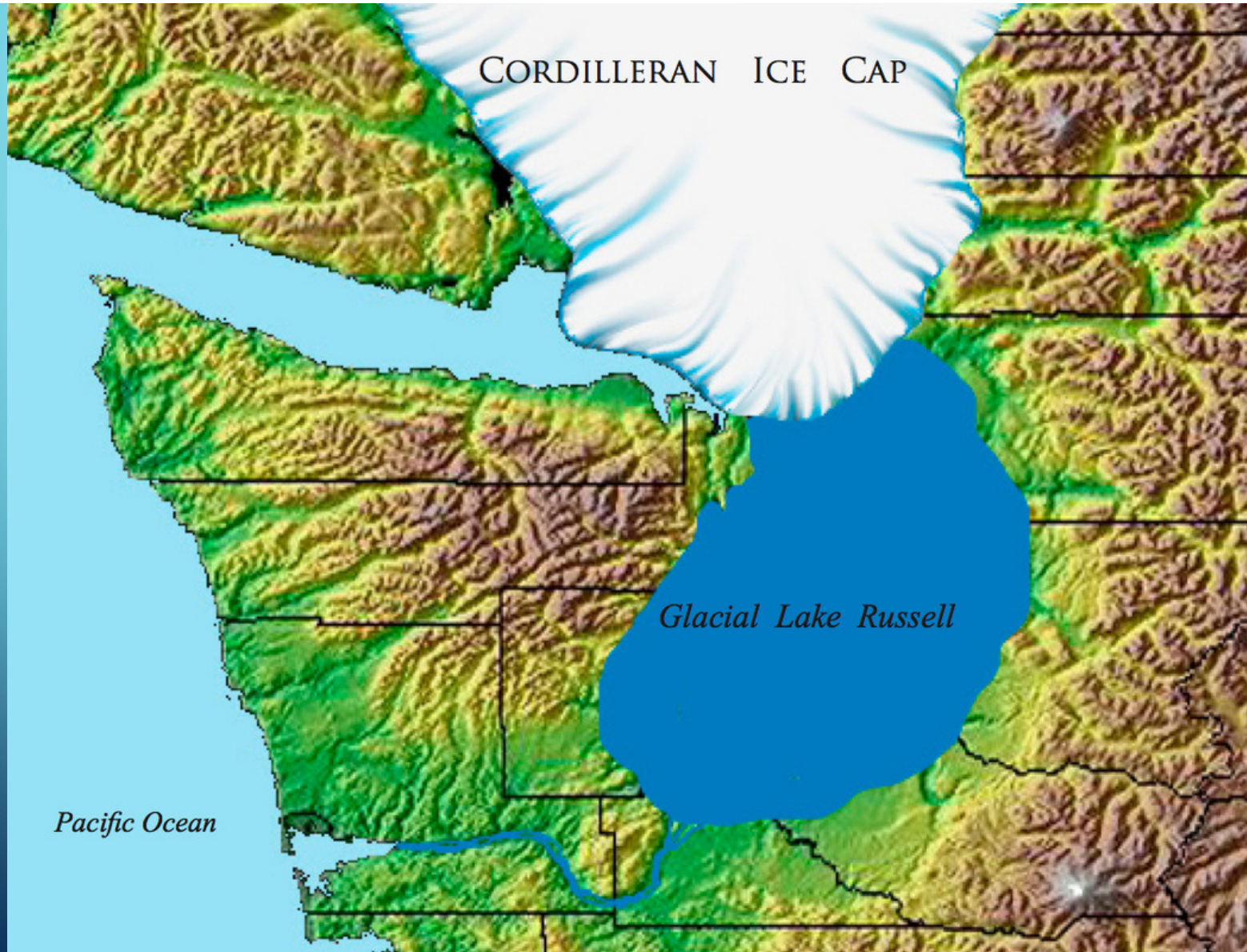
Seattle 17,500 years ago



3000 ft

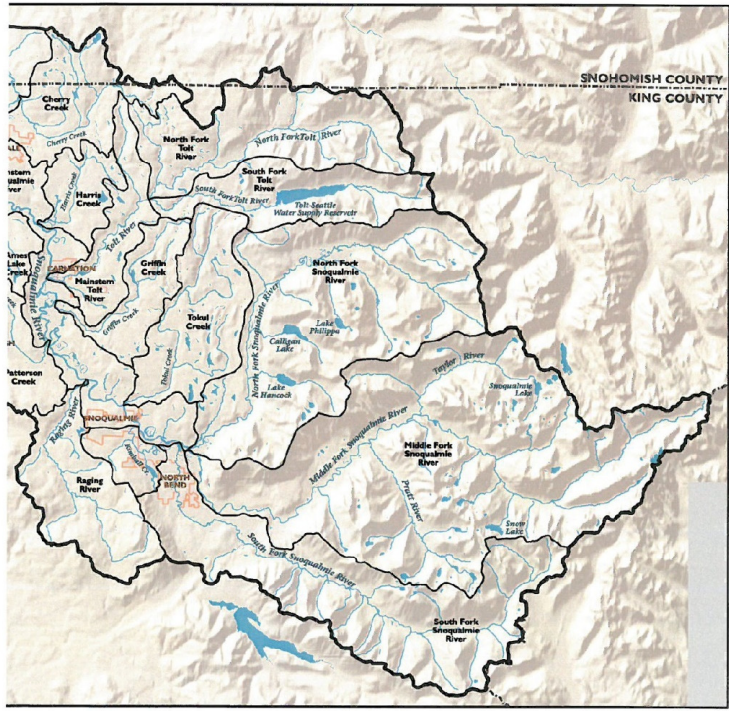
603 ft





# Snoqualmie Valley





**SNOQUALMIEV**  
**Figure**  
**SUBBAS**

- Subbasin
- Watershed
- Stream
- Lake/Riv
- Incorpor



The information provided on this map has been compiled from various sources and is not intended to be used as a legal document. The information is provided as a general guide only and is not intended to be used as a legal document. The information is provided as a general guide only and is not intended to be used as a legal document.





